

2019 COMMUNITY HEALTH ASSESSMENT WILLIAMSON COUNTY, TEXAS | CITY HEALTH PROFILES

Williamson County

HEALTH BEGINS WHERE YOU LIVE, WORK, PLAY, AND WORSHIP



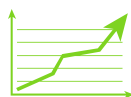
547,545

PEOPLE LIVE HERE

MEDIAN AGE: 35.8 YEARS

50.8% FEMALE | 49.2% MALE

60.9% WHITE | 24.1% HISPANIC
6% BLACK | 6% ASIAN



30%

POPULATION GROWTH
SINCE 2010
TX: 13%



65%

HOMEOWNERSHIP
TX: 55%

86% DIFF BETWEEN
NEIGHBORHOODS



45%

RENTERS PAY 30% OF
INCOME ON HOUSING
TX: 48%

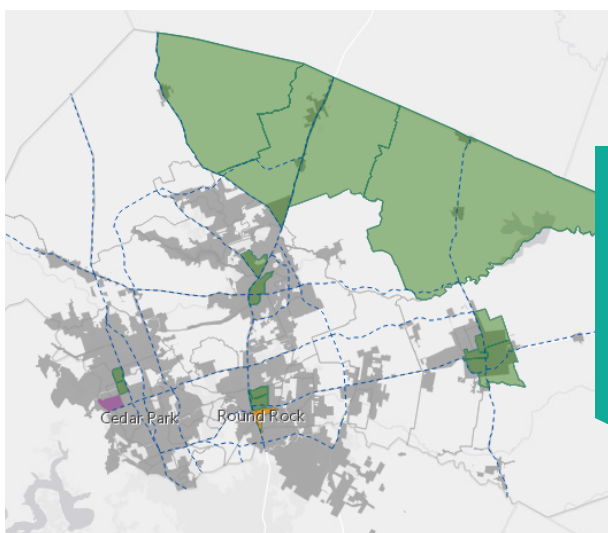
83% DIFF BETWEEN
NEIGHBORHOODS

TX: TEXAS VALUE

COUNTY VALUE IS:
● HIGHER THAN STATE
● LOWER THAN STATE



HEALTH EQUITY "MEANS THAT EVERYONE HAS A FAIR AND JUST OPPORTUNITY TO BE AS HEALTHY AS POSSIBLE." IT IS CRITICAL TO THE ECONOMIC PROSPERITY, SAFETY, AND SECURITY OF ALL RESIDENTS. -RWJF



HEALTH EQUITY ZONE

Neighborhoods (outlined in green) in the county where residents lack access to health services and the resources they need to live healthy lives.



82 YRS

LIFE EXPECTANCY
TX: 79 YRS

14.9 YRS DIFF BETWEEN
NEIGHBORHOODS
LOW: 73.7 YEARS |
HIGH: 88.6 YEARS



\$79K

MEDIAN HOME INCOME
TX: \$57K

\$115K DIFF BETWEEN
NEIGHBORHOODS



8%

PEOPLE LACK EASY
ACCESS TO GROCERY
STORE

61% DIFF BETWEEN
NEIGHBORHOODS



8%

CHILDREN LIVING IN
POVERTY
TX: 23%

45% DIFF BETWEEN
NEIGHBORHOODS



/ HWCoalition



HealthyWilliamsonCounty.org

